



JANET T. MILLS
GOVERNOR

STATE OF MAINE
DEPARTMENT OF CORRECTIONS
111 STATE HOUSE STATION
AUGUSTA MAINE
04333-0111

RANDALL A. LIBERTY
COMMISSIONER

Department of Corrections Division of Juvenile Services 2020 Update

Over the last five years, the Maine Department of Correction’s (MDOC) Division of Juvenile Services has significantly reduced the use of secure confinement (Long Creek Youth Development Center) by strategically investing in community-based programming for justice involved youth.

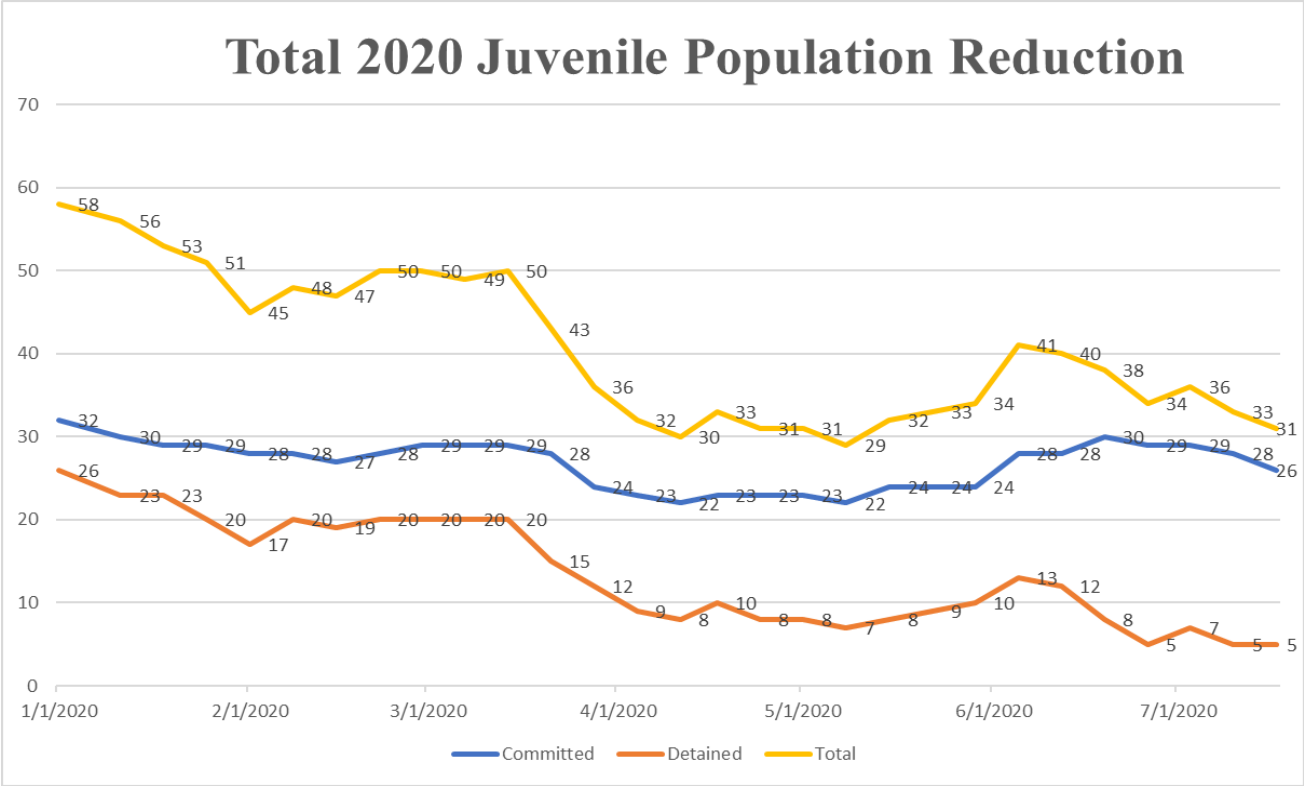
While the Department recognizes the need for secure confinement, the focus has been on reducing the reliance. By investing in three major areas: Referral (pre-adjudication), Supervision (probation), and Commitment/Reentry, significant reductions to the committed and detained population have been made as illustrated below.

Throughout the COVID-19 pandemic MDOC has partnered with community stakeholders, DHHS and members of the judicial branch to ensure that the detainment of youth is only for an imminent public safety threat, while also working to streamline the process of community integration so that youth transition out of Long Creek as quickly and as safely as possible.

Since the start of 2020 there has been a 47% reduction in Long Creek population, as depicted below. The COVID-19 pandemic has helped to accelerate this reduction, as depicted in the line graph on the following page.

Maine Juvenile Corrections Population			
	1/1/2020	7/17/2020	% Reduction
Committed	32	26	19%
Detained	26	5	81%
Total	58	31	47%

Total 2020 Juvenile Population Reduction



The remainder of this document highlights and provides descriptions of the actions taken by DOC’s Juvenile Services to ensure youth involved with the juvenile system are supported with the resources they need in order to stay in the community and out of Long Creek.

Community Program Investments

Referral/Diversion: Youth are referred to the Maine Department of Corrections Division of Juvenile Services (field services) after having been charged with committing a crime. Field services works to divert all first-time offenders from court by referring youth to restorative justice and community service programs throughout the state. Total youth referred to Juvenile Services for 2019 was 2445.

1. Restorative Justice Programming
 - Aroostook County Action Program;
 - Maine Youth Court;
 - Penquis;
 - Restorative Justice Institute;
 - Restorative Justice Project; and
 - Restorative Justice Project at Long Creek.
2. Community Service Programming
 - Learning Works Service Works.
3. Diversion Programming
 - Spurwink Diversion to Assets.

In Fiscal Year 2015 to 2019 these providers served approximately 1,792 youth.

The total cost for Referral/Diversion programming per year is \$1,095,000.

Diversion Recidivism Rate is 7%.

*All the recidivism data is from the 2017 Muskie Youth Recidivism report. The numbers are based on adjudications/convictions within 2 years of post-discharge date.

Supervision/Probation: Youth under formal supervision from field services have been charged or adjudicated of a crime and placed on conditions of release or probation by the court. Juvenile Community Correction Officers (JCCOs) supervise these youth and employ a wide range of programs and services to prevent recidivism and reduce the need/use of secure confinement.

The community-based programs the division of juvenile services funds are: home-based treatment interventions (improves family functioning), wraparound case management services and short-term shelter placements.

4. Home-Based Treatment Interventions: Multi-Systemic Therapy (MST) & Family Functional Therapy (FFT)
 - Kennebec Behavioral Health (MST);
 - Tri-County Mental Health (MST);
 - Maine Behavioral (MST);
 - Catholic Charities (FFT); and
 - Spurwink (FFT).
5. Hi-Fidelity Wraparound Services
 - Opportunity Alliance Wraparound; and
 - Wings Wraparound Service.
6. Educational/Employment
 - Carleton Project
7. Alternative to Detention Placements
 - New Beginnings Emergency Shelter and Shaw House (Shelter)
 - Tree Street Youth Evening Reporting Center Sequoia and Redwood Programs

In Fiscal Year 2015 to 2019 these providers served approximately 1,454 youth.

The total cost for Supervision/Probation programming per year is \$1,658,710.

Supervision Recidivism Rate is 35%.

Commitment/Reentry: Youth who are not successful on probation and/or present a serious public safety risk are committed to Long Creek Youth Development Center by the court, for an indeterminate period of time. Most committed youth reenter back into the community in about a year. The community-based programs that the juvenile division funds or runs are: transitional housing, employment development and intensive mentor/advocacy-based support. These programs work to prevent committed youth from returning to facility with new criminal charges. See table below for specific Long Creek treatment programming.

- 8. Reentry Programming
 - Youth Advocate Programs; and
 - Bearings House.
- 9. Transitional Housing
 - Opportunity Alliance RISE Program
- 10. Employment
 - Goodwill Industries

Bearings House is managed and staffed by Long Creek personnel with the equivalent cost of \$1,200,000.

In Fiscal Year 2018 to 2019 RISE served approximately 12 youth.
In Fiscal Year 2015 to 2019 Goodwill served approximately 200 youth.
 Youth Advocate Programs and Bearing House began in 2019; therefore, youth served numbers are unavailable.
The total cost for these programs annually (excluding Bearings and Goodwill) is \$589,316.

Committed Discharged Youth Recidivism Rate is 53%.

Total Community Program Annual Investment: \$3,343,026.

Long Creek Youth Developmental Center Behavioral Health Programming
 There are currently 29 committed youth in secure confinement and 30 detained youth.

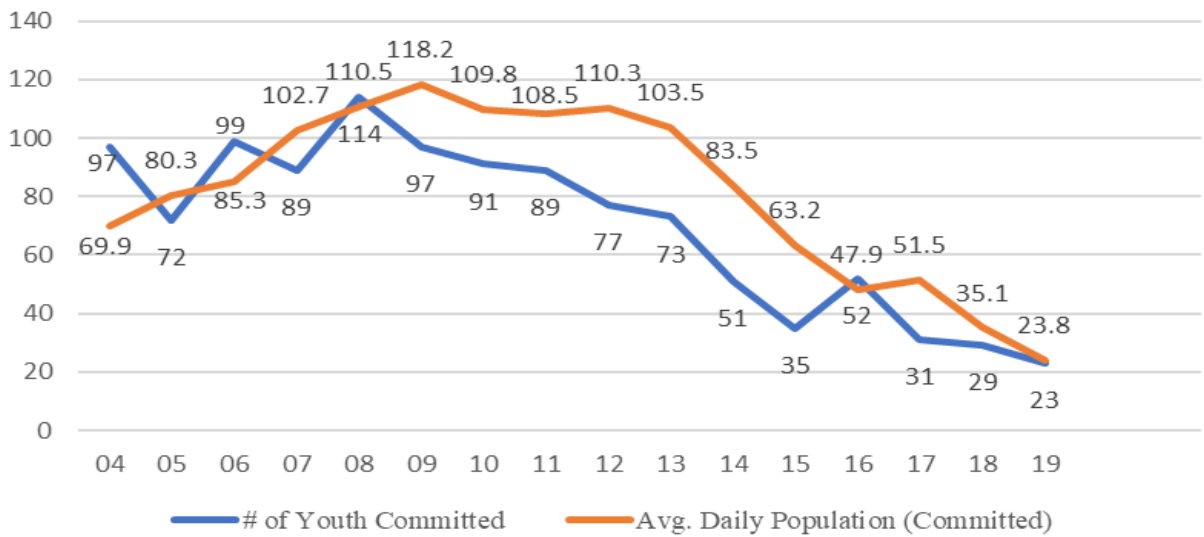
Treatment Programming Available at Long Creek

1. Case Management by LSW and mental health assessments done by a LCSW;
2. Behavioral Health (Wellpath)
 - a. 24 hours/week Psychiatry time;
 - b. 3 full-time clinicians;
 - c. 1 full-time Clinical Director;
 - d. 4 full-time Mental Health Technicians;
 - e. 2 full-time substance use clinicians (Day One);
3. Two full-time LCSW one in each detention unit provided by OCFS.

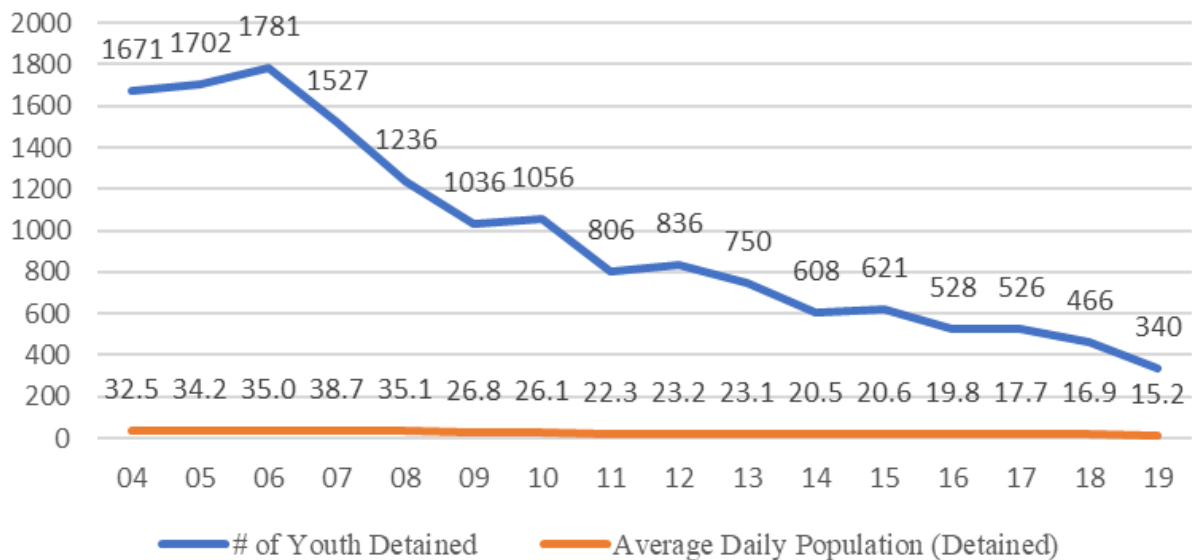
Risk Reduction Group Programming

1. Aggression Replacement Training (ART);
4. Sexual Behavior Treatment groups (SBT);
5. Interpersonal Violence;
6. Dialectical Behavioral Therapy (DBT);
7. Cognitive Behavioral Intervention- Core Adult (CBI-CA);
8. Trauma Focused CBT;
9. Australian Centre for Arson Research and Treatment (ACART);
10. Voices (Gender specific curriculum);
11. 7 Challenges;
12. Helping Men Recover; and
13. Prime for Life.

Total Youth Committed and Avg. Daily Committed Population (2004-2019)



Total Youth Detained & Avg. Daily Detained Population



Return on Community-Based Program Investment

- In the last fifteen years, there was a 77% reduction in commitment.
- In the last fifteen years, there was a 79% reduction in detention.
- There has been a consistent increase in the diversion rate since 2015 (Current 89%).
- In the last 4 years, there was 126 youth released to community reintegration and only 7 youth returned to the facility with new charges.