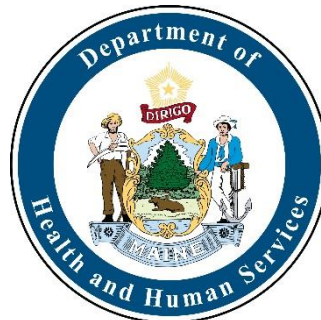


# Maine Center for Disease Control and Prevention

Nirav Shah, Director

Nancy Beardsley, Deputy Director

January 21, 2021



# Maine CDC

## **Maine's Public Health Agency**

Maine CDC, an agency within the Maine Department of Health and Human Services (DHHS), is responsible for providing essential public health services that preserve, promote, and protect health

Maine CDC is accredited by the Public Health Accreditation Board (PHAB)

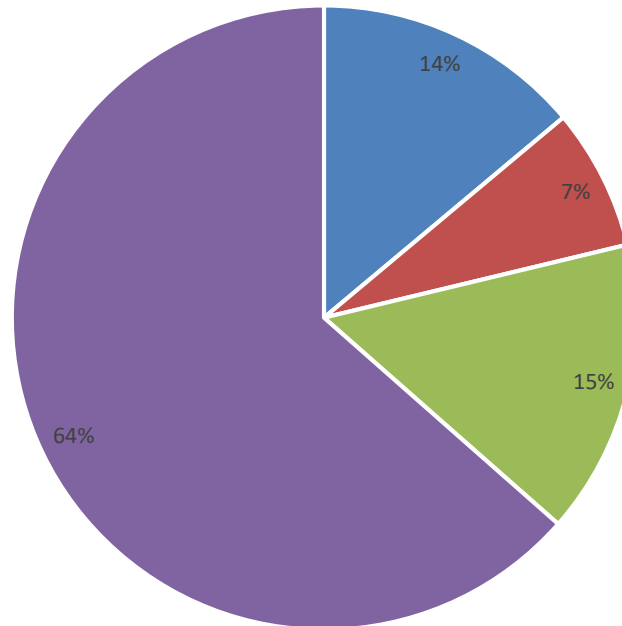
# Maine CDC At A Glance

## Head Count (as of December 2020)

Total State Positions:	341
Current Vacancies:	49
Total Budget:	\$229,050,645 (64% grants)

# CDC: SFY '21 Budget Sources

SFY21 CDC Budget Sources

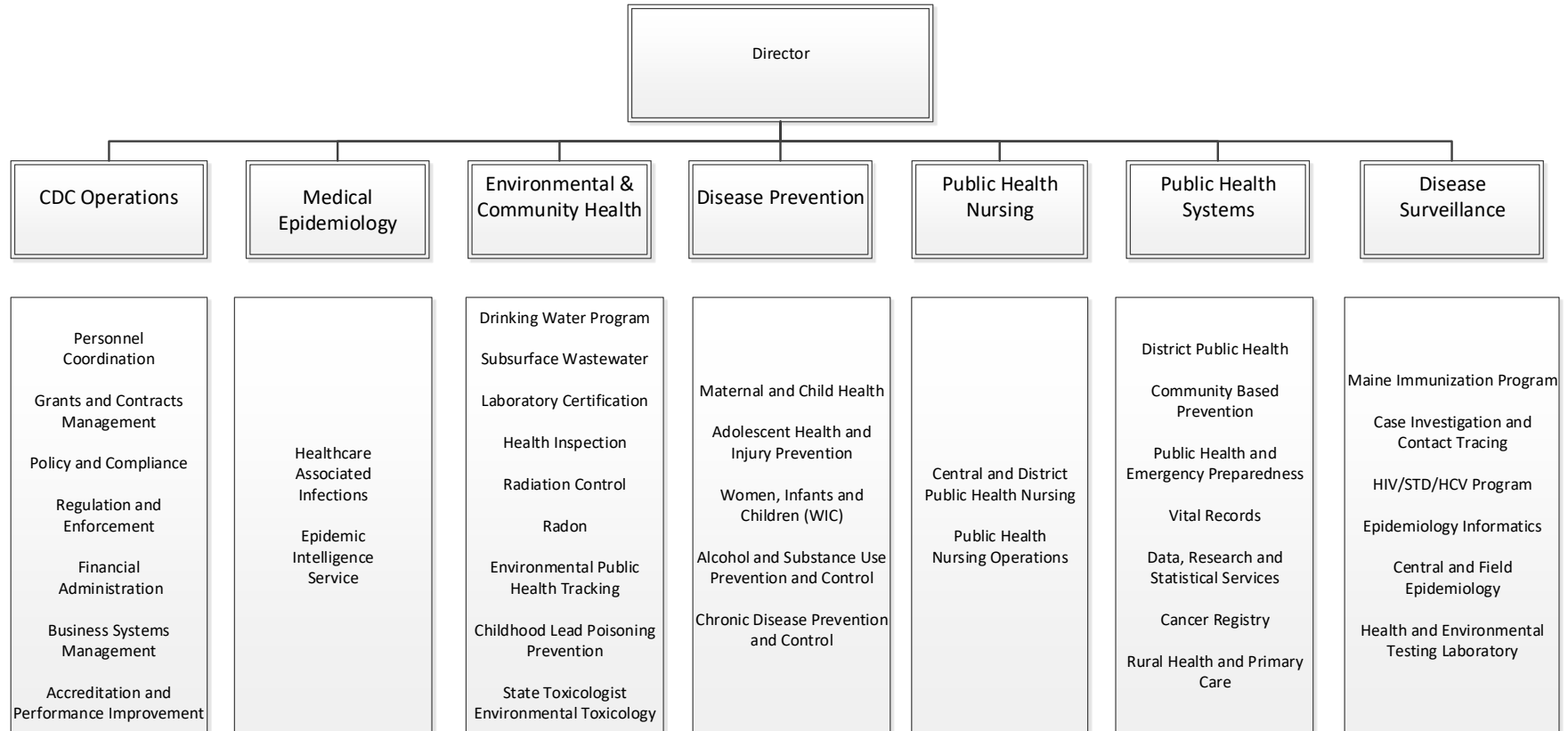


■ General Fund (010) ■ Funds for a Health Maine (024) ■ Other Special Revenue Funds (014) ■ Federal Funds (013,015 & 022)

The SFY '21 Budget for Maine CDC is:					
	Personal Services	All Other	Capital	Total	Percentage
General Fund (010)	6,805,577	25,059,029	-	31,864,606	14%
Funds for a Health Maine (024)	2,097,965	14,688,302	-	16,786,267	7%
Other Special Revenue Funds (014)	9,802,829	25,137,917	-	34,940,746	15%
Federal Funds (013,015 & 022)	<u>16,001,503</u>	<u>129,125,753</u>	<u>331,770</u>	<u>145,459,026</u>	64%
Total Budget	34,707,874	194,011,001	331,770	229,050,645	

# CDC Organization

Maine Center for Disease  
Control and Prevention  
January 2021



# COVID-19 Response

- Planning began in early January 2020—over two months before Maine’s first case.
- Distributing critical testing supplies and personal protective equipment
- Testing patient specimens for COVID-19 at HETL
- Providing clinical and epidemiological guidance to clinicians, health care providers and systems, and the public
  - Maine CDC epidemiologists have answered 21,796 requests for consultation from residents and health care providers seeking guidance
- Tracking and assisting with outbreak prevention and control

As of January 21, 2021  
**CASES: 35,637      DEATHS: 536**

# Disease Surveillance

- Responds to infectious disease reports and conducts epidemiological investigations into outbreaks and potential exposures to communicable diseases
- Operates the Health and Environmental Testing Laboratory (HETL) to identify health hazards and bioterrorism threats
- Protects Maine from vaccine-preventable disease by supplying vaccine for all Maine children
- Monitors emergency department visits, EMS, and death certificates for syndromic surveillance of infectious diseases
- Provides services for persons living with HIV or TB

# Disease Surveillance – COVID Response

- **Infectious Disease Epidemiology Program**
  - Analyze and report daily on COVID data
  - Investigates COVID-19 cases and outbreaks
  - Established 5 new teams to investigate COVID cases and outbreaks
  - Created text notification to inform people of positive COVID lab result
- **Infectious Disease Contact Tracing**
  - Established a new program to educate close contacts of those with COVID and enroll in a quarantine monitoring program
  - Enrolls those close contacts in the quarantine monitoring program, Sara Alert



# Disease Surveillance – COVID Response

- **Health and Environmental Testing Laboratory (HETL)**
  - Tested >250,000 COVID-19 samples.
    - 7-fold increase in the HETL's annual workload
  - Made possible because of a partnership with Maine-based Idexx, which help establish a mobile laboratory adjacent to HETL
  - Increased staffing in clinical section from 15 to 50
  - Partnership with Jackson Lab to sequence COVID-19 samples
  - Maintained normal public health laboratory functions such as testing for tuberculosis, rabies, foodborne disease, and pediatric blood lead levels

# Disease Surveillance – COVID Response

- **Maine Immunization Program**
  - Distributes COVID vaccine
  - Educates public and providers on COVID vaccine, as well as provides information on storage/handling and transport
  - Manages all COVID vaccine data
    - COVID vaccine data requires reporting in 24 hours
  - Educates on reporting process for vaccine adverse events

# Environmental and Community Health

- **Drinking Water Program**

- Ensures safe and reliable supplies of public drinking water for all Maine people and visitors
- Since 1998, provided more than \$200 million to support public drinking water infrastructure in a revolving loan fund
- Provides oversight and technical support to nearly 500 local plumbing inspectors to administer and enforce the State's subsurface wastewater rules.
- Performs accreditation oversight for water and wastewater testing laboratories.

- **Radiation Control Program**

- Registers and ensures competency of radon testers, labs and mitigators
- Works with cancer prevention experts to limit exposure to radon
- Inspects x-ray, mammography, and nuclear medicine equipment to ensure proper operation and safety

# Environmental and Community Health

- **Health Inspection Program**

- Ensures health and safety at Maine's 8,000 licensed restaurants, hotels, motels, campgrounds, youth camps, public pools and body artist shops

- **Environmental & Occupational Health Program**

- Responds to childhood lead poisoning, private well water contamination, and other chemical and climate hazards

# Environmental and Community Health – COVID Response

- All programs provided staff for reassignment to assist with case investigations and contact tracing.
- The Health Inspection Program followed up on thousands of complaints related to inadequate COVID-19 prevention at licensed eating and lodging establishments, working with local health representatives participating in the 2020 Keep ME Healthy Municipal Partnership grant program.
  - To date, 82 Imminent Health Hazard findings have been issued and 20 licenses have been temporarily suspended for violating COVID-19 prevention requirements.
- The Environmental & Occupational Health Program stood up Maine CDC's Contact Tracing program early in the pandemic response using the Sara Alert™ system to trace infections and limit the spread of COVID-19.

# Disease Prevention

- Reduce Maine's chronic disease burden through the provision of multiple evidence-based programs
- Improve health outcomes and decrease mortality among Maine's maternal, fetal, infant, and child populations
- Prevent youth tobacco use, substance use, and poor mental health by building children's social and emotional skills, fostering youth leadership, and implementing evidence-based programming
- Provide nutritional services for women, infants, and children via the WIC Program

# Disease Prevention

- **Chronic Disease Prevention**

- Implement evidence-based interventions, strategies, and activities to address the following chronic diseases:

- Comprehensive cancer
    - Breast and cervical health
    - Cardiovascular disease (Heart disease and stroke)
    - Diabetes, asthma, obesity

- **New in SFY2021**

- Alzheimer's Disease/BOLD Act
  - Colorectal cancer prevention
  - Cross-DHHS initiative to address health disparities related to diabetes and HIV

# Disease Prevention

- **Maternal and Child Health**

- Reduce maternal, infant and fetal mortality
- Implement safe sleep strategies
- Address substance exposed infants (SEI)
- Address children with special health needs (CSHN)
- Continue collaborative relationships with home visiting (HV) and Public Health Nursing (PHN) for prevention
- Support maternal anxiety mood disorder screening, referral and treatment
- Support increased access to behavioral health services for children and youth

- **New in SFY2021**

- Support purchase of cribettes by Maine's Safe Sleep-certified birthing hospitals



# Disease Prevention

## Tobacco and Substance Use Prevention

- Through the Maine Prevention Services structure, implement evidence-based interventions to support youth engagement and address use of tobacco, alcohol, marijuana, opioids, and other substances
- Provide support for the statewide Tobacco Quitline
- Implement mass-reach media campaigns addressing tobacco and substance use prevention and control
- Provide funding and oversight for suicide prevention interventions
- Support Maine's 15 school-based health centers
- Collaborate with Maine DOE and other state agency partners on adolescent health initiatives and the Maine Integrated Youth Health Survey

## New in SFY2021

- Full implementation of the anti-vaping media campaign
- Partnership with OBH on the OPTIONs Initiative to address opioid use
- Partnership with DOE to implement social/emotional learning curriculum

# Disease Prevention

- **Women, Infants & Children Nutritional Services (WIC)**
  - Provide nutritional services for pregnant women, infants and children up to age 5
  - Increase consumption of fresh, local produce as well as support local food production via WIC Farmers' Market Nutrition Program
  - Provide education and support for breastfeeding
  - Facilitate parenting support and referrals to other critical services needed for WIC recipients

## New in SFY2021

- Implementation of eWIC

# Disease Prevention – COVID Response

- Provided staff to assist with case investigations, contact tracing, PHEP response, and consult response
- Provided administrative support for the long-term care outreach efforts
- Conducted interviews to hire additional case investigators

# Public Health Nursing

- Provides treatment/support for substance-affected babies/parents
- Assists with public health emergencies, including infectious disease outbreaks, natural disasters, and bioterrorism
- Provides trainings and education to community partners
- Performs maternal/child home visits
- Supports safe sleep initiatives by becoming a Crib for Kids distributor.
- Supports vaccine clinics, including catch up clinics for routine childhood immunizations and flu clinics.
- Works collaboratively with the Childhood Lead Program and to provide home visits for at-risk clients.

# Public Health Nursing – COVID Response

- Assisted several organizations with the creation of Respiratory Protection Programs to allow for N95 usage
- Assisting with COVID vaccination efforts in long-term care facilities and Maine's most vulnerable/high risk populations.
- Oversight of the Maine CDC COVID 211 Nurse Advisement Line
- Dedicated Public Health Nursing staff to assist with COVID case investigations
- Provided trainings on donning/doffing PPE to long-term care facilities and other congregate living facilities
- Provided emergency staffing relief during critical staffing shortages at a LTCF experiencing a COVID outbreak

# Public Health Systems

- Prevents, prepares for, and responds to public health emergencies
- Administers Maine's vital records systems including birth, death, marriages, and adoption data
- Responds to public requests for vital records data
- Provides data, research, and statistical services including major surveys including BRFSS and PRAMS
- Increases capacity of Maine's Critical Access Hospitals in rural areas to provide greater access to healthcare
- Coordinates delivery of public health services at district level between Maine CDC and local partners
- Coordinates nearly 500 Local Health Officers in every municipality and territory in Maine

# Public Health Systems – COVID Response

- **Public Health Emergency Preparedness (PHEP)**
  - Coordinated Maine CDC’s public health emergency response
  - Distributed 3,671,684 pieces of PPE, 363,920 BinaxNow tests, 440,163 testing swabs, and 433,125 viral transport media as of 01/19/21
  - Partnered with programs across Maine CDC, including EPI & MIP to respond
- **District Public Health**
  - Assisted with local coordination and planning
  - Convene and support outbreak response in public health districts
  - Assisted with providing social support wraparound services for individuals in isolation and quarantine
- **Rural Health & Primary Care**
  - Maine's Small Rural Hospital Improvement Program (SHIP) distributed \$1.6M in one-time funding to all 19 rural hospitals to prevent, prepare for, and respond to the COVID-19 public health emergency.
  - Distributed \$40K per hospital from the Epidemiology and Laboratory Capacity (ELC) Enhancing Detection Funding for expanded COVID-19 testing.

# COVID-19 Vaccination Efforts

Maine is generally following vaccination recommendations from the Advisory Committee on Immunization Practices, an [advisory group](#) to the U.S. CDC.

Maine CDC is committed to vaccinating with velocity and equity. Vaccine availability remains limited and is the principal constraint on expanding vaccination rates.

- **Phase 1**

- 1a:** Health care workers, residents of long-term care facilities, public safety personnel, critical COVID 19 response personnel

- 1b:** People aged 65 and older (people aged 70 and older will be vaccinated first and then adults 65-69), adults with high-risk medical conditions, and frontline workers

- 1c:** Other essential workers

- **Phase 2**

- All people ages 16 and older who are not in Phase 1, with vaccine starting to become available to the general public.

Updates published at: [www.maine.gov/covid19/vaccines](http://www.maine.gov/covid19/vaccines)

Administered as of January 20, 2021

**First Doses: 74,760**

**Second Doses: 17,248**



# The Year Ahead

- Continuing with the statewide COVID response:
  - Distributing COVID vaccine
  - Expanded COVID testing
  - Ongoing case investigations and contact tracing
- Continue to re-build programs and workforce
- Re-energize outreach, communication, and prevention
- Use public health data to inform and educate
- Mobilize community partnerships to identify and solve health problems
- Enforce laws and regulations that protect health and ensure safety
- Move HETL into new lab space

# Questions?

Nirav Shah, Director

Nancy Beardsley, Deputy Director

