



MAINE STATE POLICE

Agency Overview 2021

Presented by:
COL. John E. Cote
Chief – Maine State Police



MAINE STATE POLICE
Organizational Chart

Chief
Colonel Cote

Deputy Chief
Lt. Col. Harwood

Operations Division
Major Ross

Internal Affairs / MLEAP
Lt. Love

Staff Attorney
Chris Parr

Support Services Division
Major Scott

Troop A
Lt. Holmquist

Troop G
Lt. Baker

Crime Lab
Lt. TBD

Traffic Safety
Fleet / MCRS
Lt. Scott

Troop B
Lt. Tilsley

Troop J
Lt. Charette

SBI / SOR / AIU / RMS
Mr. Ruel

Training
Specialty Teams
Lt. Tripp

Troop C
Lt. Madore

Troop K
CVEU
Lt. Hayden

Professional Licensing
MIAC
Lt. Johnston

Computer Crimes Unit
Executive Protection
Lt. Ireland

Troop D
Lt. Hood

MCU-S
Lt. Gosselin

Troop E
Lt. Hashey

MCU-C
Unsolved Homicide
Lt. Love

Troop F
Lt. Harris

MCU-N
Polygraph
Lt. Crane

FUNDING SOURCES:



General Operations

(65% General / 35% Highway)



Grant Funding



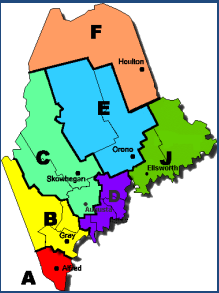
Other Special Revenue

HEADCOUNT:

SWORN: 330 (26 vacancies (17 TPR)) = 313

CIVILIAN: 118 (2 vacancies) = 116

TOTAL AUTHORIZED POSITIONS: = 448

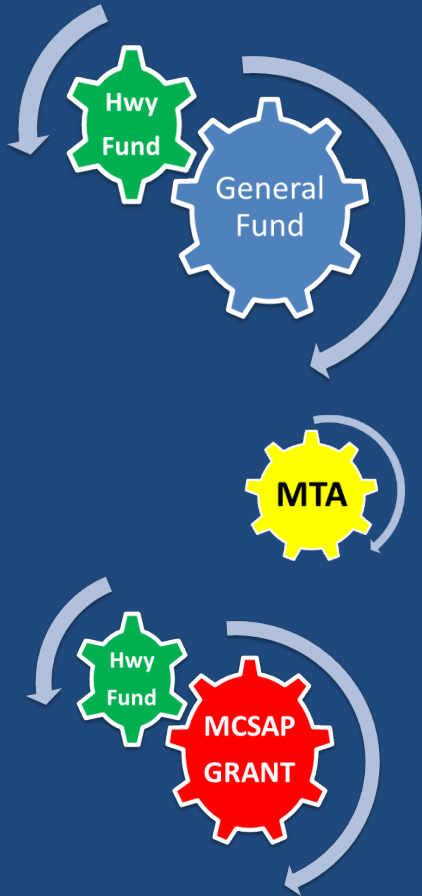


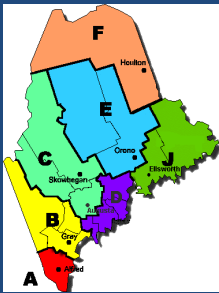
OPERATIONS DIVISION



FIELD OPERATIONS: (Law Enforcement & Criminal Investigations)

- **7 Field Troops**: Cover rural areas - general LE response, criminal investigations, traffic enforcement, crash investigation, etc. Alfred, Gray, Skowhegan, Augusta, Bangor, Ellsworth, Houlton.
- **3 Major Crimes Units**: Investigate homicides, child abuse, suspicious deaths, drug related deaths, sexual assaults, support investigations
Unsolved Homicide Unit - Created in 2016
- **Troop G**: Law Enforcement on Maine Turnpike. Drug interdiction, criminal investigations, crash investigations.
- **Troop K - CVEU**: Statewide enforcement of federal and state CMV regulations.

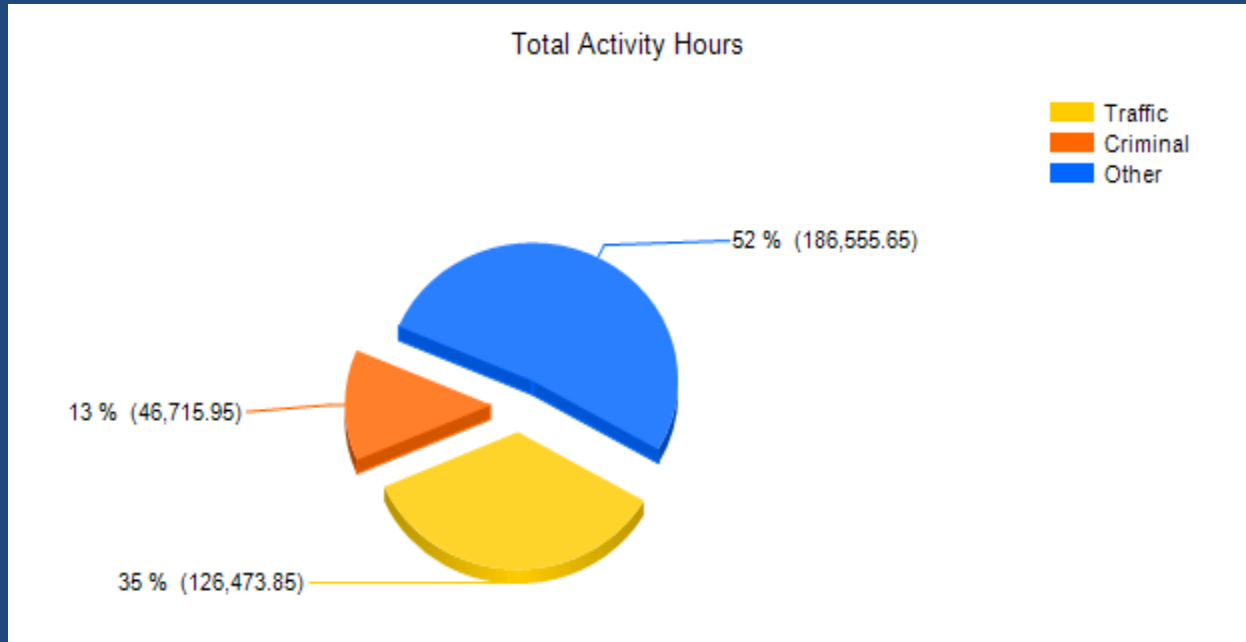




OPERATIONS DIVISION

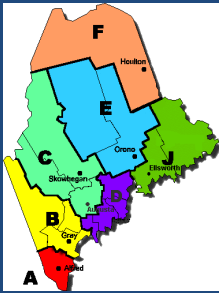
2020 Statistics

(Does not include overtime)



- Calls for Service - 69,342
- Burglaries – 199
- Thefts – 581
- Domestic Violence – 339

- Arrests on Warrants – 538
- Traffic Stops – 44,596
- Summons/Warnings – 12,111/44,578
- Traffic Crashes – 7,151



OPERATIONS DIVISION

Emphasis Points:



- **OPIOIDS** – Establishing and maintaining robust skills in drug interdiction. Collaborating with private and public sector partners for alternative sentencing and treatment for users.
- **DOMESTIC VIOLENCE** – Maintaining our focus and intensity on aggressive and complete investigation of domestic violence. Partnering with advocate groups and the courts to ensure the safety of victims.
- **MENTAL HEALTH** – Continue advanced training and education related to dealing with those in crisis and assisting in their connection to area resources.
- **SCHOOL EFFORTS** - Troopers presence in schools, speaking engagements, lockdown exercises w/schools. Coordinated w/DOE & MEMA to provide guidance and training for schools. We have trained hundreds of Maine LEO's to quickly respond to an ongoing, active school shooting incident in an effective, decisive manner.
- **DISTRACTED DRIVING EFFORTS** - Grant-funds to support educational and enforcement activities in response to crash data (>1/3 of Maine crashes due to distraction)
- **MAINE LAW ENFORCEMENT ACCREDITATION PROGRAM** – We have begun the foundational work to pursue MLEAP Accreditation in 2021-2022.



SUPPORT SERVICES DIVISION



(Support for field ops, statewide LE support & regulatory/ licensing program areas)



➤ **Maine Information & Analysis Center; (HF/GF Split funded)**

- Coordinate law enforcement intelligence
- Support for major, complex cases
- Homeland security mission – Maine’s designated Fusion Center
- Coordinate between Fed Govt & ME public/private sectors (threats, etc)



➤ **Training Unit; (HF/GF split)**

- Recruitment, selection and training of new Troopers
- Annual certification training needs for all sworn personnel
- Leadership and advanced training for personnel at various levels (LPO, NCO and Executive development courses)
- Special Response Teams; statewide assets
 - Tactical Team (about one activation per week)
 - Evidence Response Team / Crisis Negotiation Team / Dive Team
 - Canine (24 teams) / IMAT / Bomb Team
 - Crowd MGT, Honor Guard

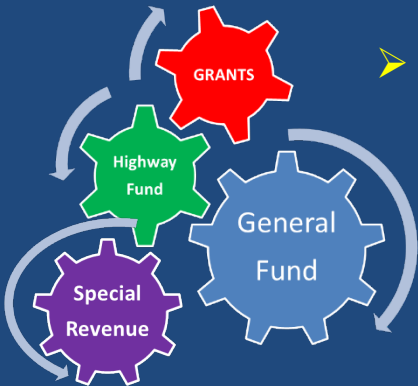


SUPPORT SERVICES DIVISION



➤ **MSP Crime Laboratory; (HF/GF Split , DOJ Grant DNA & supplies)**

- Fully accredited crime lab W/chemistry, firearms, fingerprint, DNA units
- 1000 Cases per year
- DNA – Participate in FBI Combined DNA Index System +/- 10 hits per month)



➤ **Computer Crimes Unit; (GF/HF split, SR, Grant)**

- Support crimes committed that involve use of computers, internet, etc.
- Investigate child pornography – part of Nat'l effort (Crimes Against Children)
- Cellular Analysis
- Unique model – contracted sworn investigators from local LEAs

➤ **Executive Protection Unit; (GF/HF split)**

- Provide security and protection for Maine's Governor and family.
- Provide security and protection for other dignitaries/VIP's.
- Investigate threats against the Governor or other state officials.

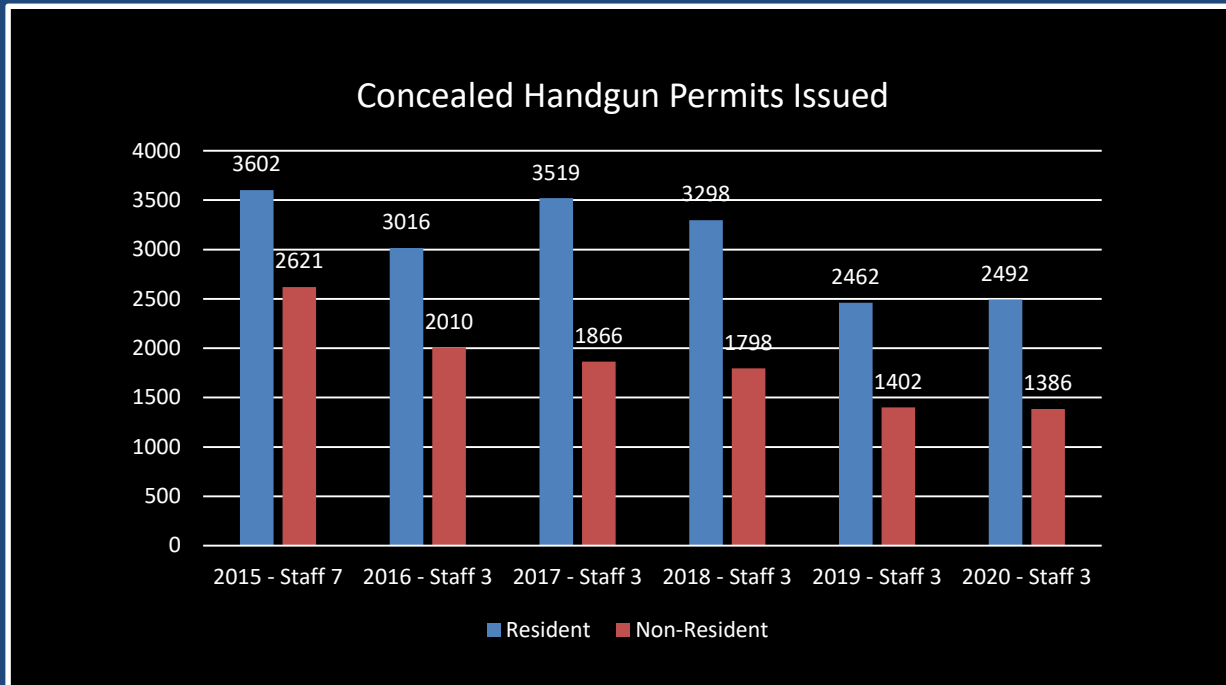


SUPPORT SERVICES DIVISION



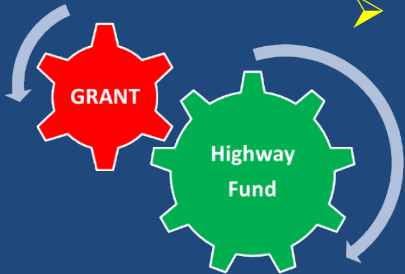
➤ Professional Licensing; (Funded by SR funding)

- Licensing for Polygraph, Professional Investigators , Security Guards
- Weapons Unit (CHP) – 41,340 Current (26,496 Resident/ 14,844 Non-Resident)
- Application volume of approx. 20 permits per day.



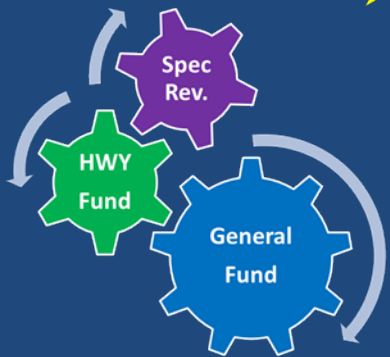


SUPPORT SERVICES DIVISION



➤ Traffic Safety Unit; (HF, BHS grant)

- MV Inspections – enforce regulations, sales (1.4 M stickers...)
- School bus inspections
- Specialized crash response services (reconstruction, mapping, EDR)
- Manage crash report database
- Unmanned Aerial Vehicle Program – Crash and Scene Mapping



➤ State Bureau of Identification; (GF/HF split, SR for All Other)

- Manage Maine's criminal history records for LE use & public sales
- Manage Maine's sex offender registry (policy area)

➤ Access Integrity Unit; (GF/HF split)

- Provide access to State and National Motor Vehicle Records for all ME LEA's
- Conduct training, site security and records audits of all ME LEA's.
- Manage security of Maine's Telecommunication Systems

➤ Records Management Unit; (GF/HF split)

- Manage State Law Enforcement Records Management Data (5 agencies)

Questions??