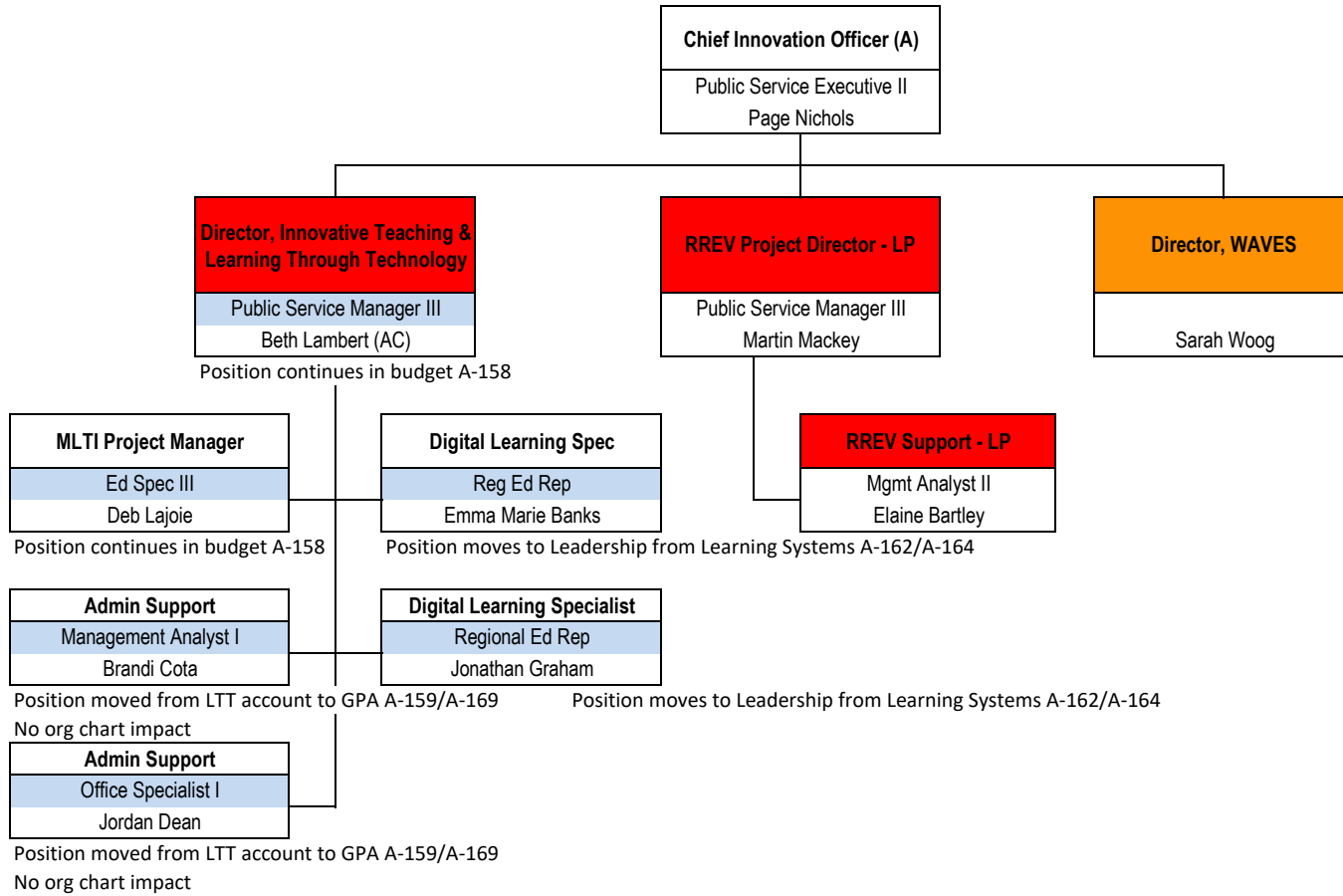


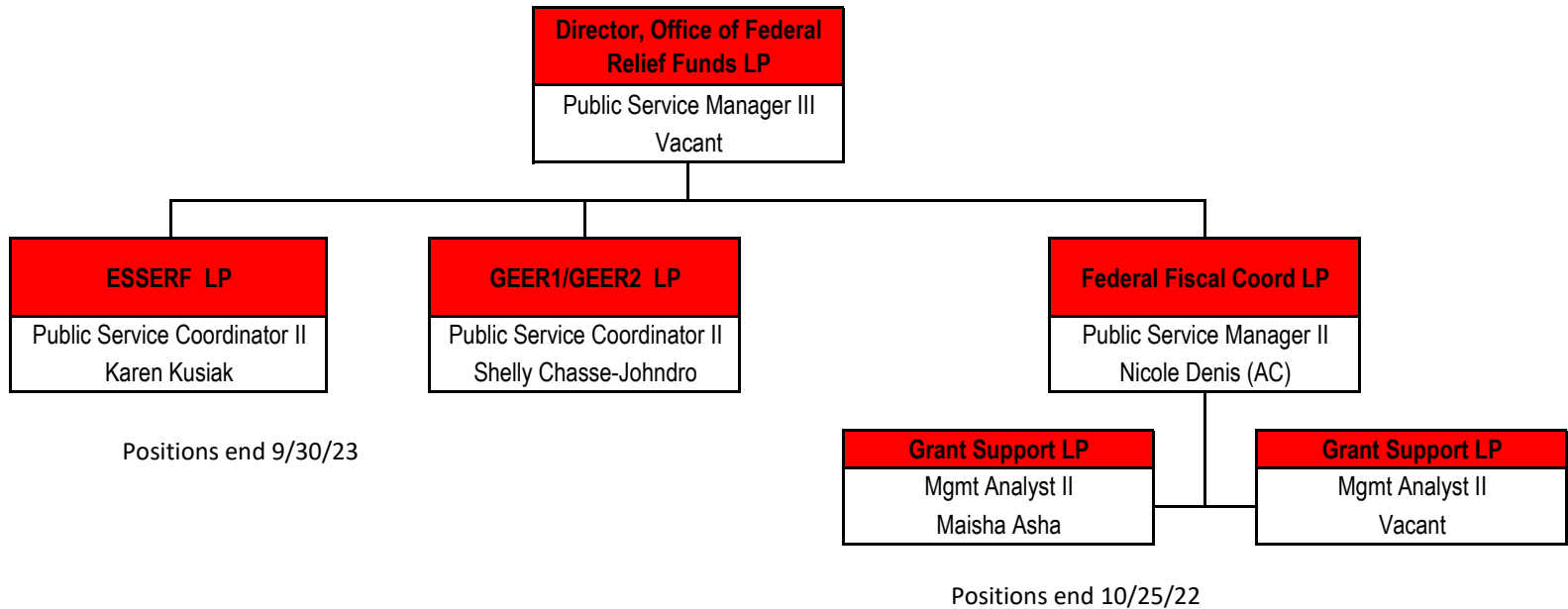
A = Appointed
 AC = Acting Capacity
 ARPF = Approved reclass, pending funding
 LP = Limited-Period
 No color = General Fund
 Red = Federal Fund
 Green = Other Special Revenue Funds
 Dark Blue = Block Grant
 Orange = Contract
 Light Blue - positions included in budget

DEPARTMENT OF EDUCATION
 OFFICE OF INNOVATION
 Organizational Chart
 February 26, 2021



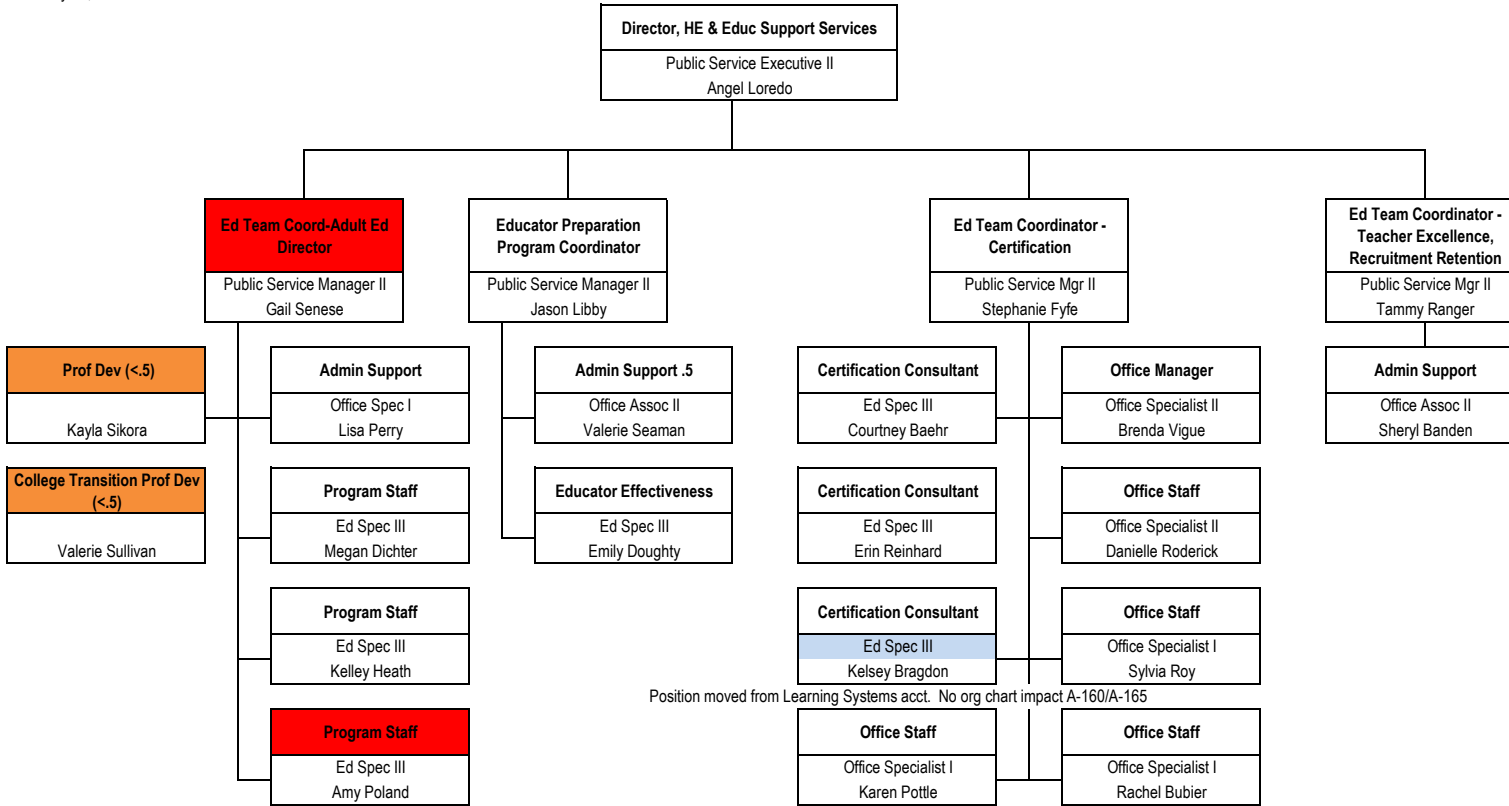
- A = Appointed
- AC = Acting Capacity
- ARPF = Approved reclass, pending funding
- LP = Limited-Period
- No color = General Fund
- Red = Federal Fund
- Green = Other Special Revenue Funds
- Dark Blue = Block Grant
- Orange - Contract
- Light Blue - positions included in budget

DEPARTMENT OF EDUCATION
 OFFICE OF FEDERAL RELIEF PROGRAMS
 Organizational Chart
 February 26, 2021



- A = Appointed
- AC = Acting Capacity
- ARPF = Approved reclass, pending funding
- LP = Limited-Period
- No color = General Fund
- Red = Federal Fund
- Green = Other Special Revenue Funds
- Dark Blue = Block Grant
- Orange - Contract
- Light Blue - positions included in budget

DEPARTMENT OF EDUCATION
 HIGHER EDUCATION & EDUCATOR SUPPORT SERVICES TEAM
 Organizational Chart
 February 26, 2021

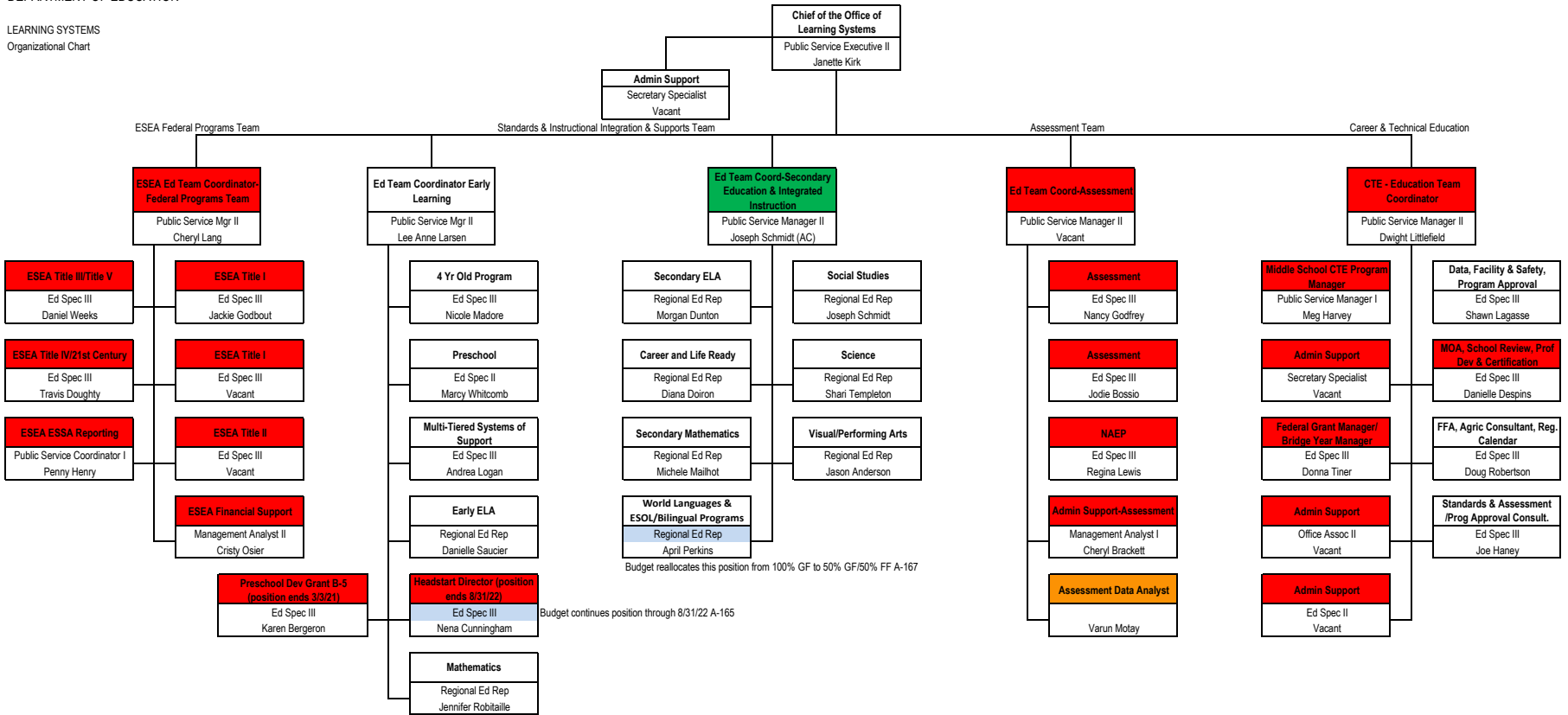


A = Appointed
 AC = Acting Capacity
 ARPF = Approved reclass, pending funding
 LP = Limited-Period
 No color = General Fund
 Red = Federal Fund
 Green = Other Special Revenue Funds
 Dark Blue = Block Grant
 Orange - Contract

 Light Blue - positions included in budget

DEPARTMENT OF EDUCATION

LEARNING SYSTEMS
Organizational Chart

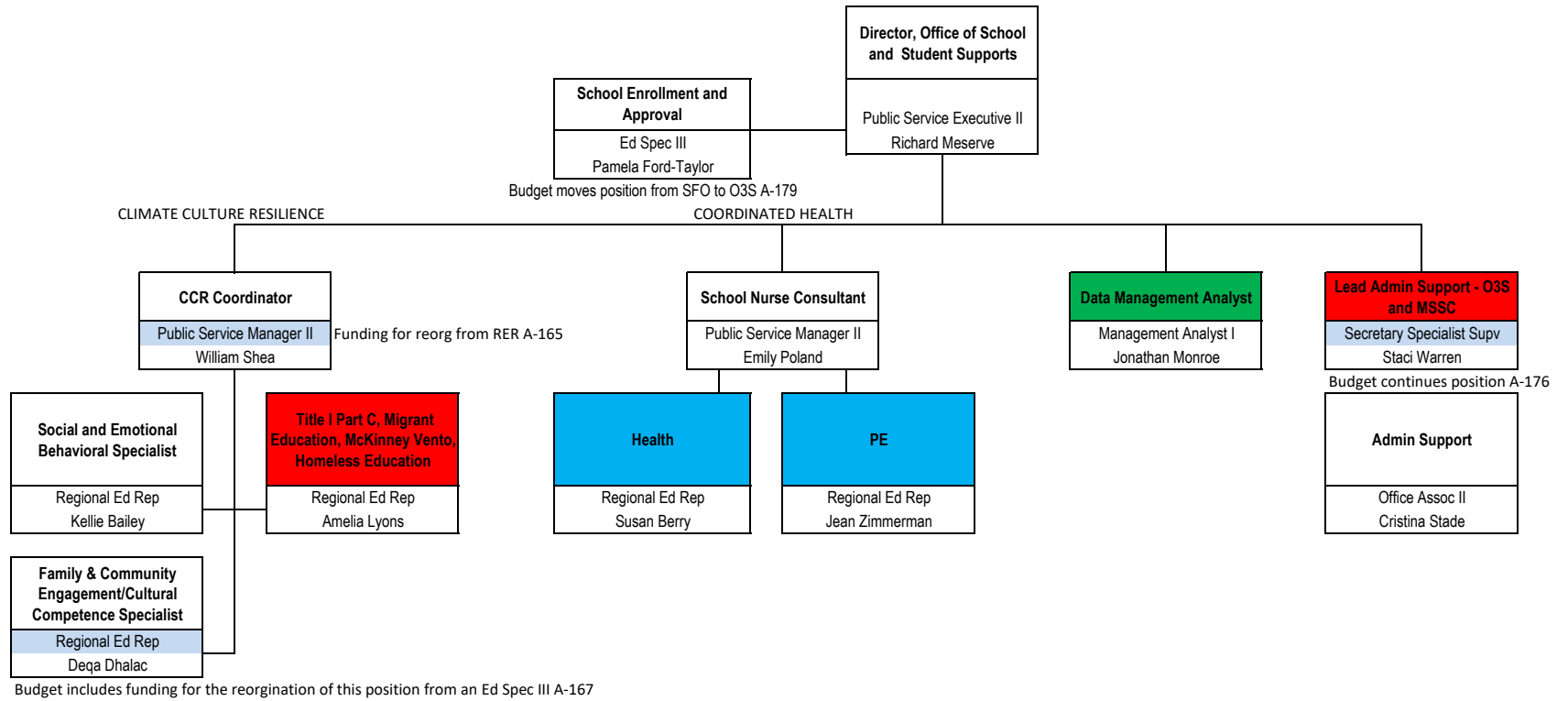


Budget reallocates this position from 100% GF to 50% GF/50% FF A-167

Budget continues position through 8/31/22 A-165

- A = Appointed
- AC = Acting Capacity
- ARPF = Approved reclass, pending funding
- LP = Limited-Period
- No color = General Fund
- Red = Federal Fund
- Green = Other Special Revenue Funds
- Dark Blue = Block Grant
- Orange - Contract
- Light Blue - positions included in budget

DEPARTMENT OF EDUCATION
 OFFICE OF SCHOOL AND STUDENT SUPPORTS
 Organizational Chart
 February 26, 2021



All of these positions, except the School Enrollment Home Schooling position which is included in School Finance & Operations, are included in the Learning Systems Team Program.
 A new office (Office of School and Student Supports) was created. The budget moves the above positions to it.
 A-165/A-166/A-177/A-178

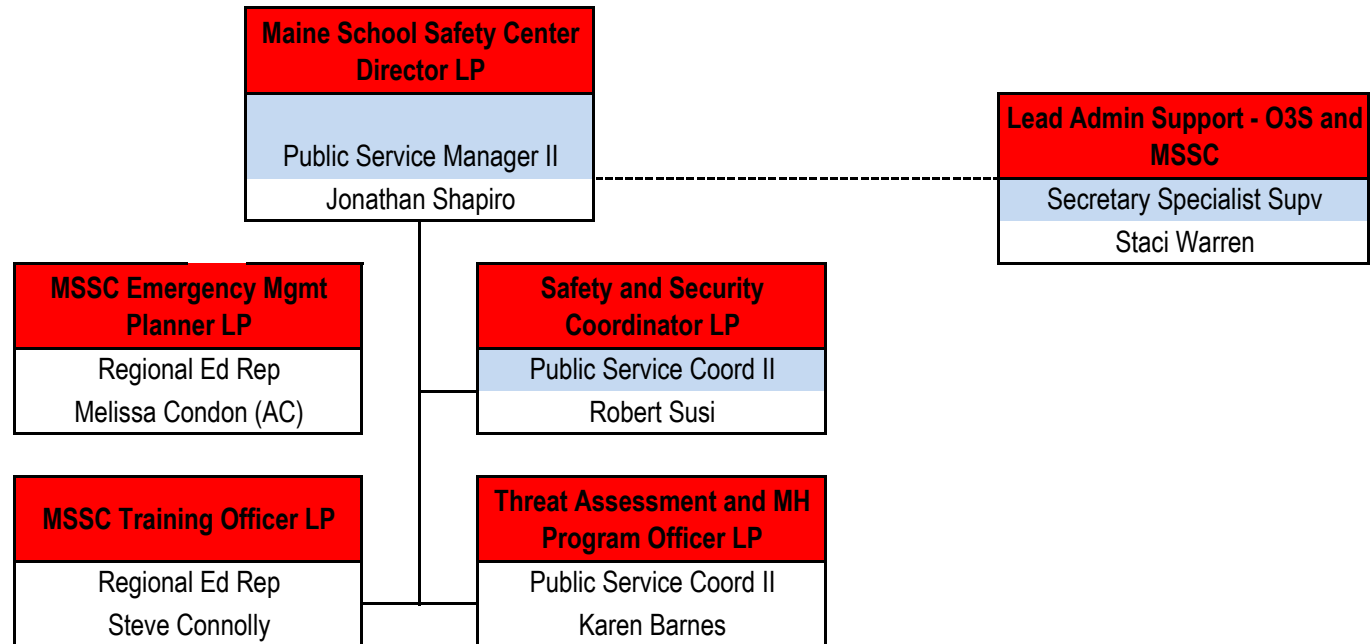
- A = Appointed
- AC = Acting Capacity
- ARPF = Approved reclass, pending funding
- LP = Limited-Period
- No color = General Fund
- Red = Federal Fund
- Green = Other Special Revenue Funds
- Dark Blue = Block Grant
- Orange = Contract
- Light Blue = positions included in budget

DEPARTMENT OF EDUCATION

MAINE SCHOOL SAFETY CENTER

Organizational Chart

February 26, 2021



All of these positions are included in the Learning Systems Team Program

Budget includes continuing 3 positions with General Fund dollars A-167/A-172

A = Appointed

AC = Acting Capacity

ARPF = Approved reclass, pending funding

LP = Limited-Period

No color = General Fund

Red = Federal Fund

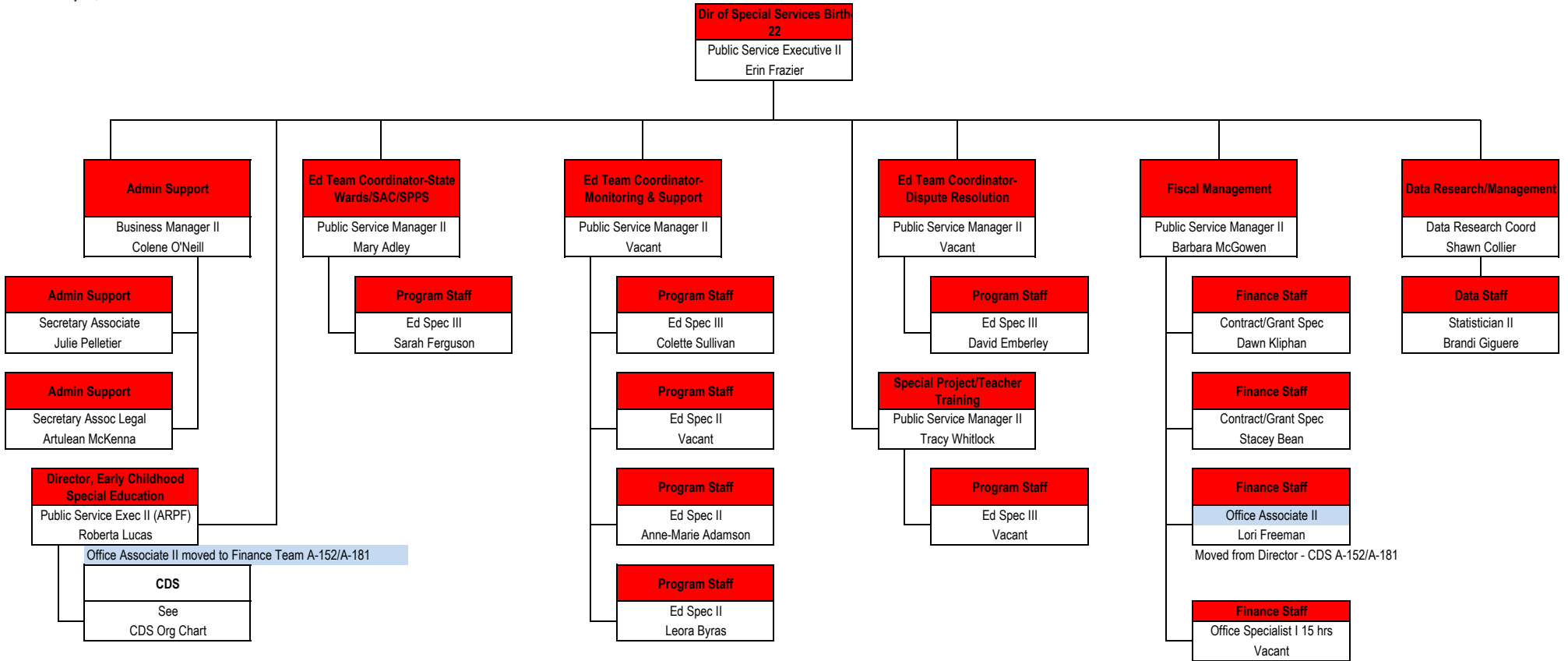
Green = Other Special Revenue Funds

Dark Blue = Block Grant

Orange - Contract

Light Blue - positions included in budget

DEPARTMENT OF EDUCATION
 SPECIAL EDUCATION & CDS
 Organizational Chart
 February 26, 2021



Dir of Special Services Birth-22
 Public Service Executive II
 Erin Frazier
 In Special Services tab

**Director, Early Childhood
 Special Education**
 Public Service Exec II (ARPF)
 Roberta Lucas
 In Special Services tab

Administrative Assistant
 Robyn Neal

Data Manager
 Vacant

HR Director
 Dan Alley

Finance Director
 Nancy Brown-Mooney

9 Sites
 Aroostook
 Downeast
 First Step
 Midcoast
 Opportunities
 PEDS
 Reach
 Two Rivers
 York

QA & Referral Coordinator
 Vacant

Quality Assurance Assistant
 Kelly Cummings

Office Operations Assistant
 Clarissa Labbe

Payroll & Benefits Specialist
 Beverly LaCasce

**Payroll Processor & HR
 Assistant**
 Jamie Vellani

Payroll and HR Assistant
 Jon Madden

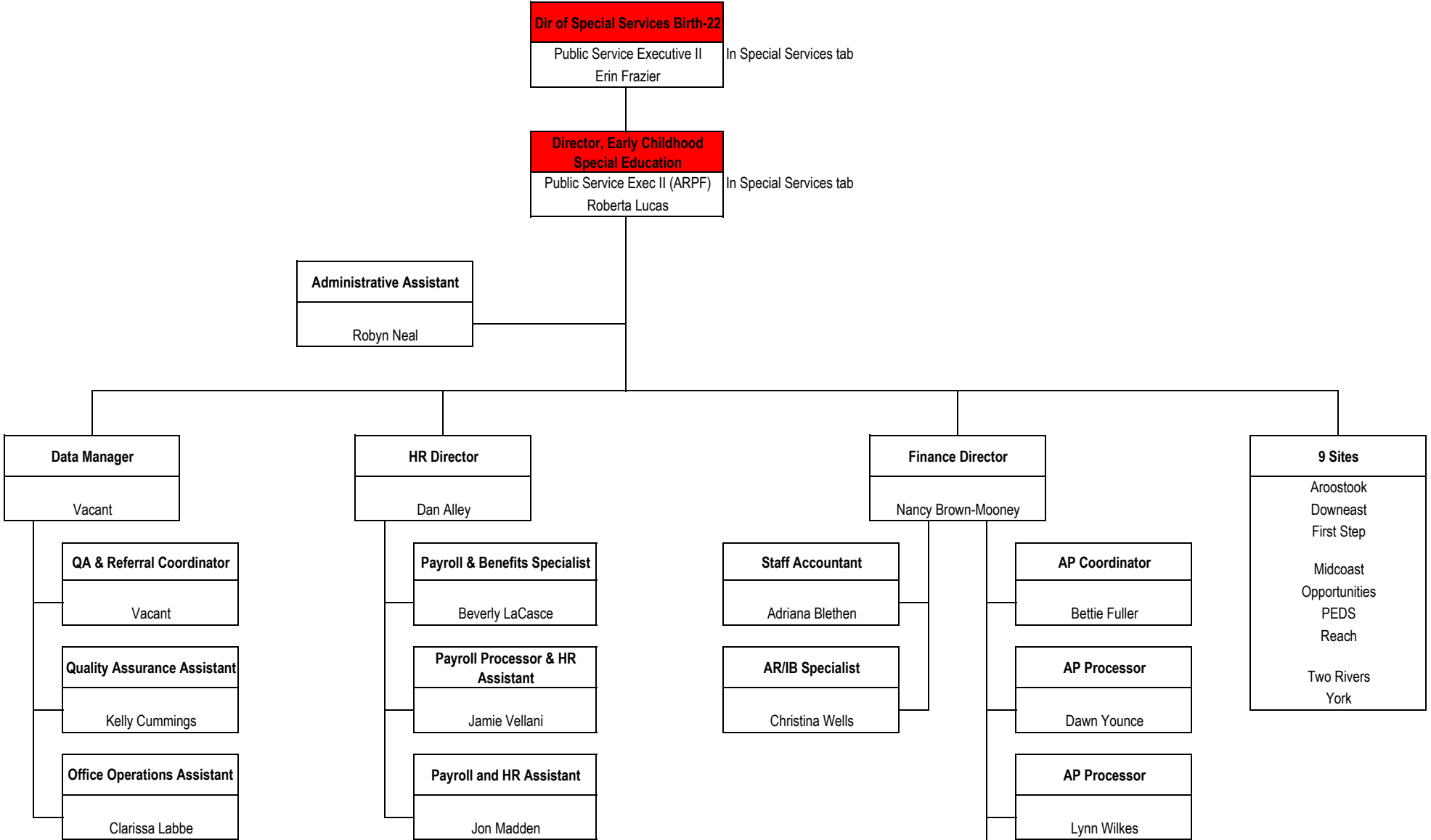
Staff Accountant
 Adriana Blethen

AR/IB Specialist
 Christina Wells

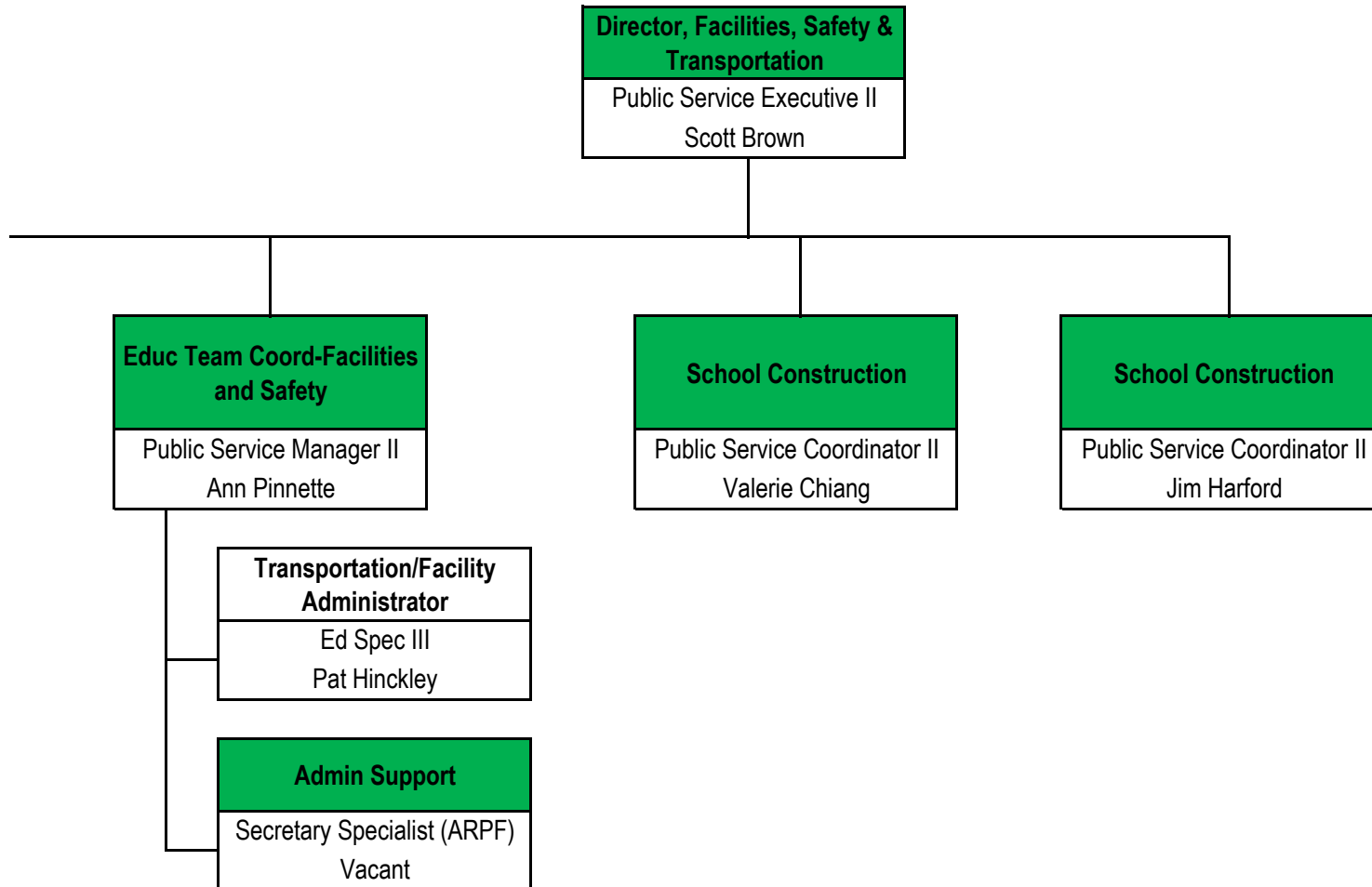
AP Coordinator
 Bettie Fuller

AP Processor
 Dawn Younce

AP Processor
 Lynn Wilkes



DEPARTMENT OF EDUCATION
 OFFICE OF FACILITIES AND TRANSPORTATION
 Organizational Chart
 February 26, 2021



A = Appointed
 AC = Acting Capacity
 ARPF = Approved reclass, pending funding
 LP = Limited-Period

No color = General Fund

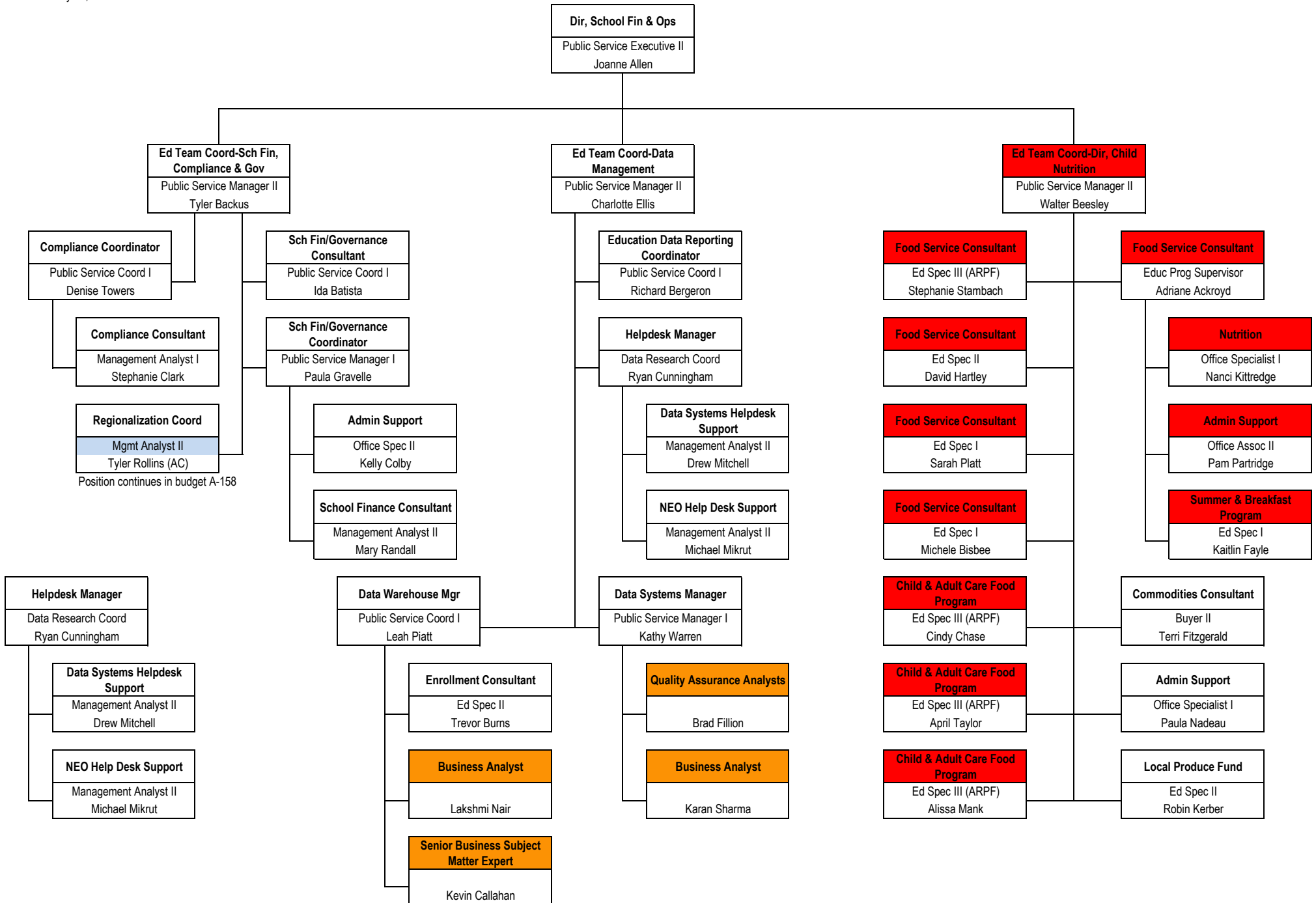
Red = Federal Fund

Green = Other Special Revenue Funds

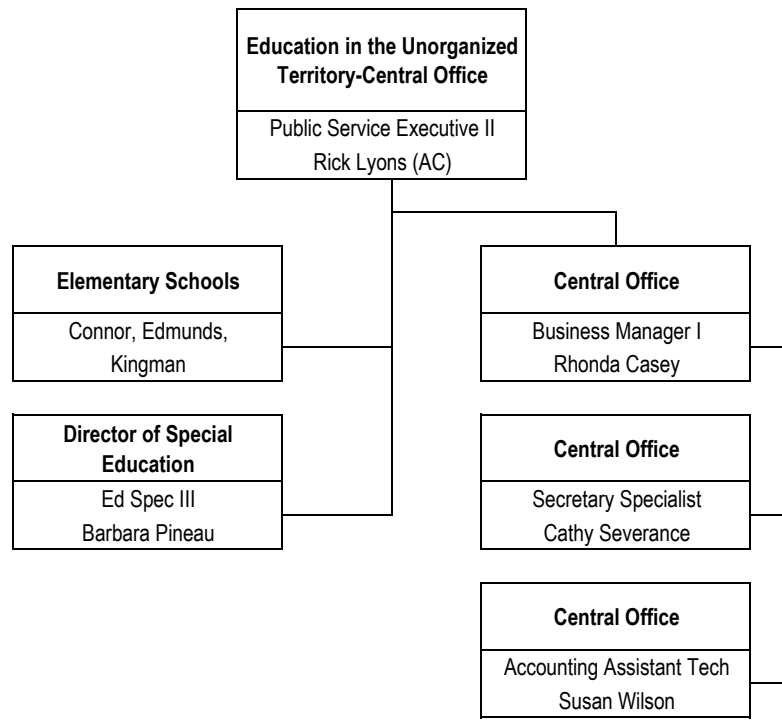
Dark Blue = Block Grant

Orange - Contract

Light Blue - positions included in budget



DEPARTMENT OF EDUCATION
 EUT
 Organizational Chart
 February 26, 2021



A = Appointed
 AC = Acting Capacity
 ARPF = Approved reclass, pending funding
 LP = Limited-Period
 No color = General Fund
 Red = Federal Fund
 Green = Other Special Revenue Funds
 Dark Blue = Block Grant
 Orange - Contract

 Light Blue - positions included in budget